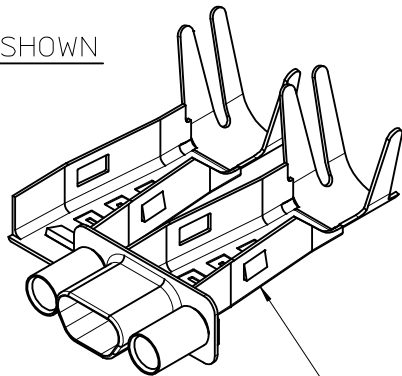


10	9	8	7	6	5	4	3	2	1
MATERIAL NUMBER	ENGINEERING NUMBER								
834219101	83421-9101								

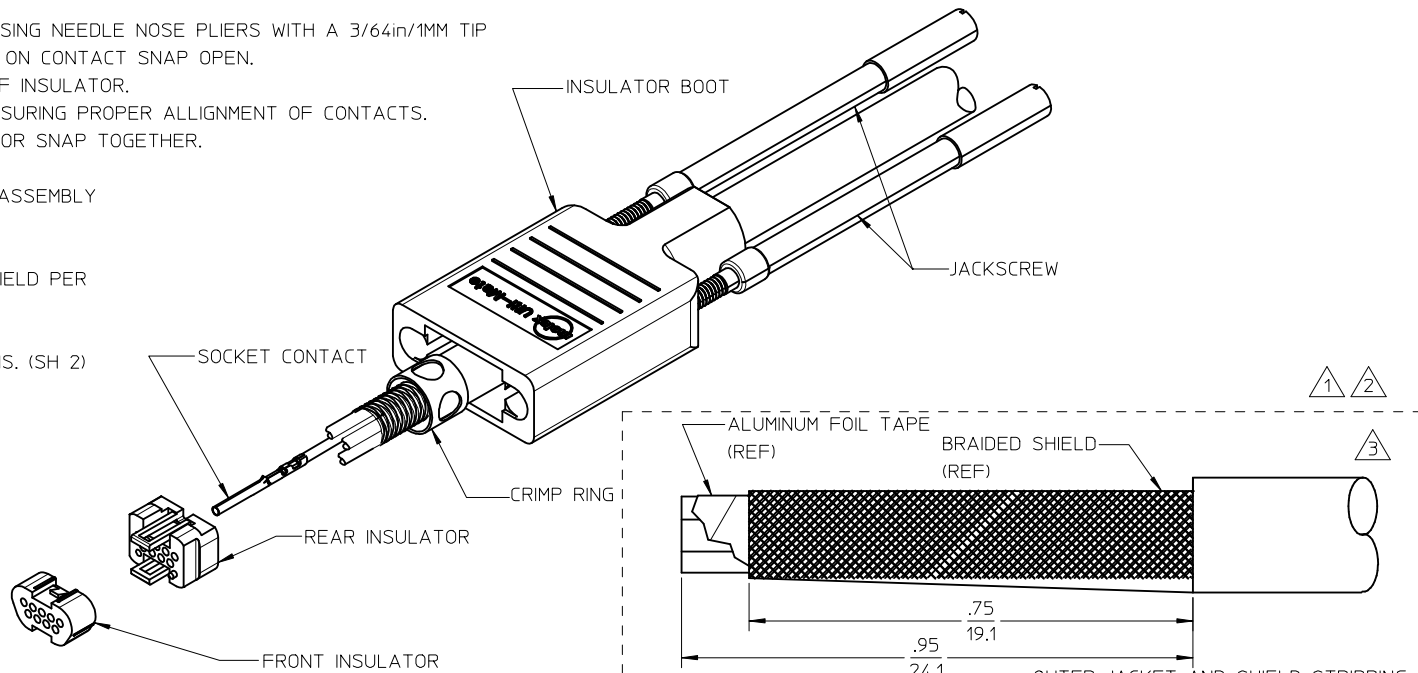
## CONNECTOR ASSEMBLY INSTRUCTIONS

- 1 SLIDE BOOT OVER CABLE.
- 2 SLIDE CRIMP RING OVER CABLE. BRAIDED SHIELD FOLDS BACK OVER CRIMP RING.
- 3 STRIP CABLE PER STRIPPING INSTRUCTIONS. (SH 1&2)
- 4 CRIMP CONTACTS PER CRIMP INSTRUCTIONS. (SH2)  
SEE CRIMP SPEC 638207800 FOR FINE ADJUST APPLICATOR.  
SEE CRIMP SPEC 638111400 FOR HAND TOOL.
- 5 INSERT CONTACTS INTO BACK OF REAR INSULATOR USING NEEDLE NOSE PLIERS WITH A 3/64in/1MM TIP  
PUSH CONTACT INTO REAR INSULATOR UNTIL "WINGS" ON CONTACT SNAP OPEN.  
CONTACT SHOULD NOT EXTEND BEYOND THE BACK OF INSULATOR.  
PLACE FRONT INSULATOR ONTO REAR INSULATOR ASSURING PROPER ALLIGNMENT OF CONTACTS.  
CONTINUE TO PUSH UNTIL FRONT AND REAR INSULATOR SNAP TOGETHER.
- 6 MOUNT INSULATOR SUBASSEMBLY IN BACKSHELL SUBASSEMBLY PER ASSY INSTRUCTION. (SH2)
- 7 CLOSE BACKSHELL SUBASSEMBLY AROUND CABLE SHIELD PER INSTRUCTIONS. (SH 2)
- 8 CRIMP BACKSHELL TO METAL BRAID PER INSTRUCTIONS. (SH 2)
- 9 SLIDE BOOT OVER BACKSHELL SUBASSEMBLY.
- 10 INSERT JACKSCREWS INTO BOOT.

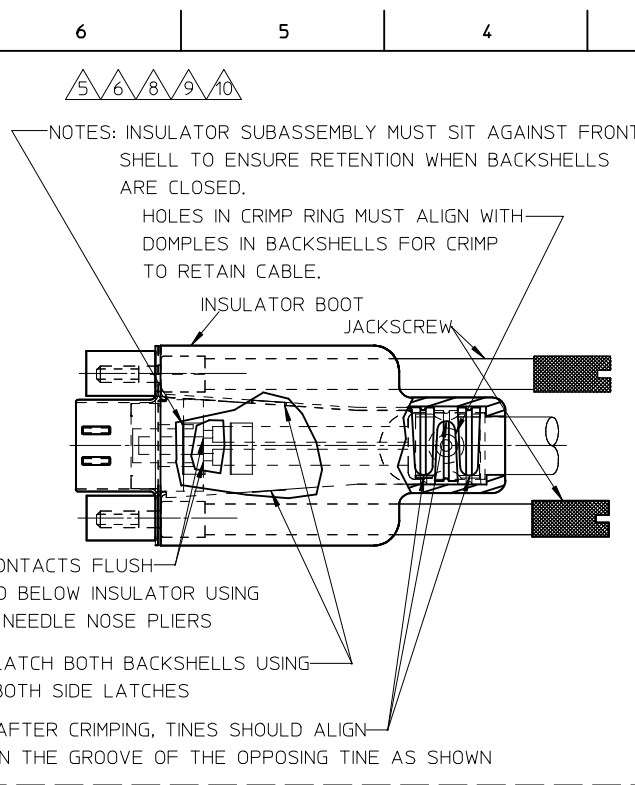
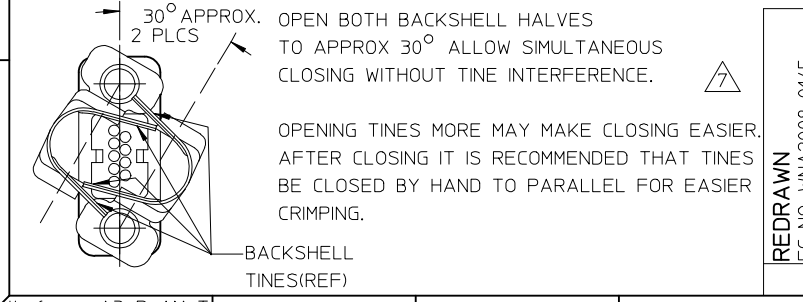
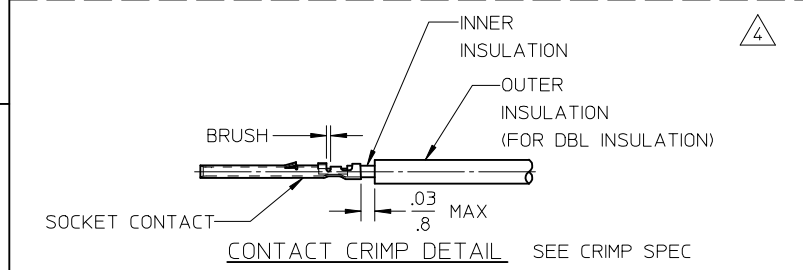
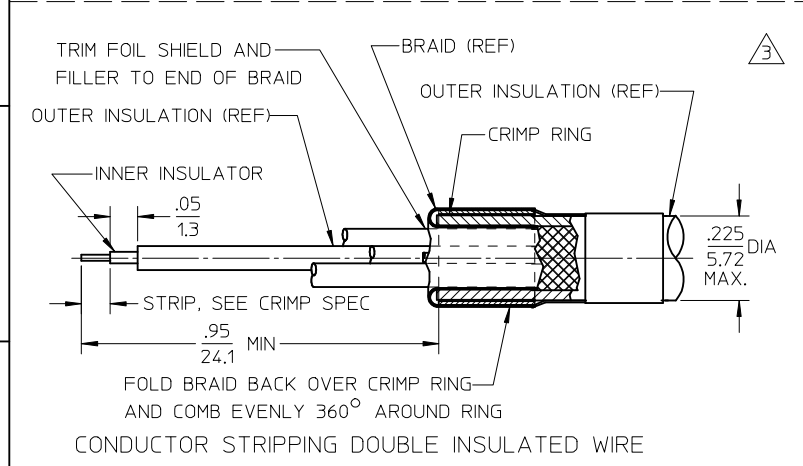
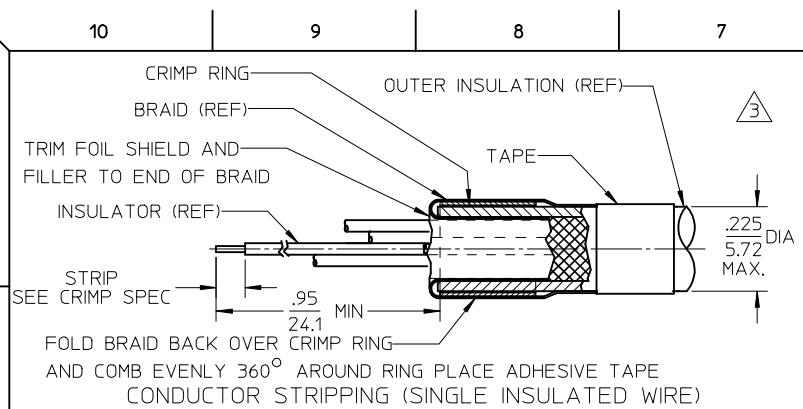
9-POSITION SHOWN



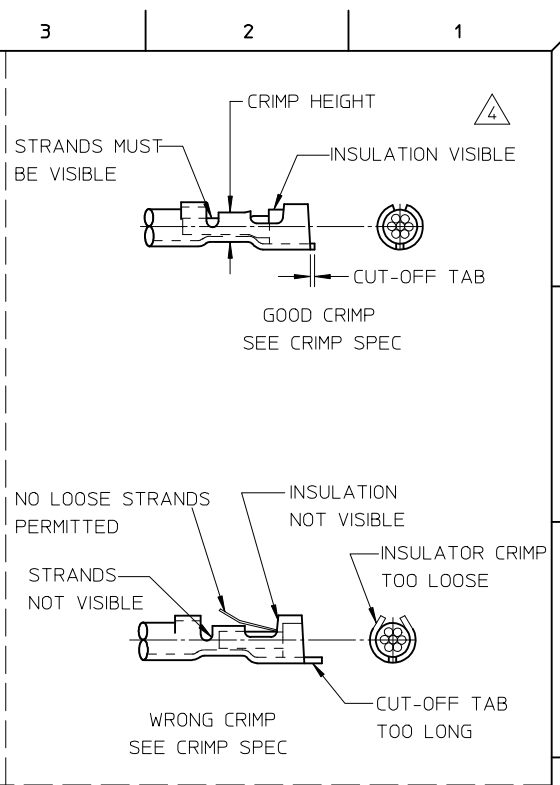
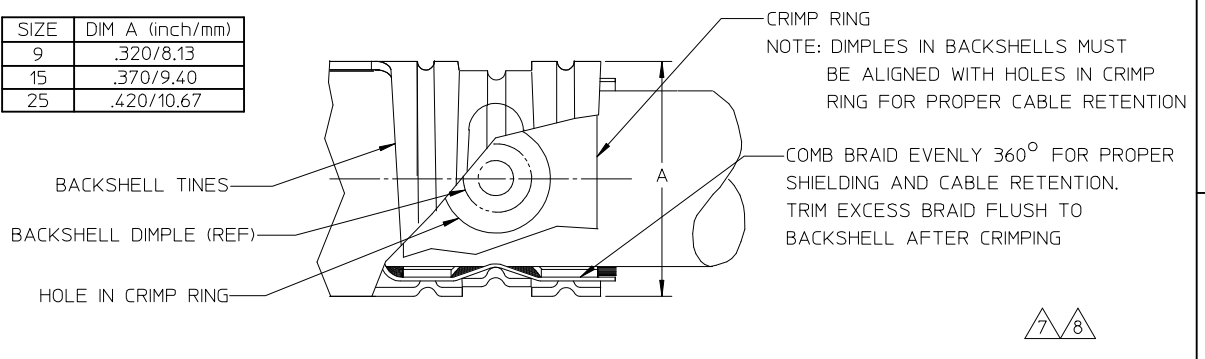
BACKSHELL SUB-ASSY



<b>REDRAWN</b> EC NO: WNA2008-0145 DRWNR: RUPERT 2008/10/17 CHKD: APPR: J. MURPHY 2008/11/12 REV	DESCRIPTION QUALITY SYMBOLS ▽=0 ◻=0	GENERAL TOLERANCES (UNLESS SPECIFIED) <table border="1"> <thead> <tr> <th></th> <th>mm</th> <th>INCH</th> </tr> </thead> <tbody> <tr> <td>4 PLACES</td> <td>± ---</td> <td>± ---</td> </tr> <tr> <td>3 PLACES</td> <td>± ---</td> <td>± .005</td> </tr> <tr> <td>2 PLACES</td> <td>± 0.13</td> <td>± .01</td> </tr> <tr> <td>1 PLACE</td> <td>± 0.25</td> <td>± ---</td> </tr> <tr> <td colspan="3">ANGULAR ± 1/2°</td> </tr> </tbody> </table>		mm	INCH	4 PLACES	± ---	± ---	3 PLACES	± ---	± .005	2 PLACES	± 0.13	± .01	1 PLACE	± 0.25	± ---	ANGULAR ± 1/2°			DIMENSION STYLE <b>IN/MM</b>	SCALE <b>2:1</b>	DESIGN UNITS <b>INCH</b>	THIRD ANGLE PROJECTION
		mm	INCH																					
4 PLACES	± ---	± ---																						
3 PLACES	± ---	± .005																						
2 PLACES	± 0.13	± .01																						
1 PLACE	± 0.25	± ---																						
ANGULAR ± 1/2°																								
DRAFT WHERE APPLICABLE MUST REMAIN WITHIN DIMENSIONS	DRAWN BY JLOMASTR DATE 05/01/26	CHECKED BY RDEROSS DATE 05/02/02	APPROVED BY REDORSS DATE 05/02/04	TITLE <b>ASSEMBLY INSTRUCTIONS          COMMERCIAL MICRO D          CONNECTOR</b>	<b>MOLEX</b> MOLEX INCORPORATED	MATERIAL NO. <b>SD-83421-006</b>																		
	SIZE <b>A3</b>	THIS DRAWING CONTAINS INFORMATION THAT IS PROPRIETARY TO MOLEX INCORPORATED AND SHOULD NOT BE USED WITHOUT WRITTEN PERMISSION				DOCUMENT NO.	SHEET NO. <b>1 OF 2</b>																	



SIZE	DIM A (inch/mm)
9	.320/8.13
15	.370/9.40
25	.420/10.67



**REDRAWN**  
 IEC NO: WNA2008-0145  
 DRWNR: RUPERT 2008/10/17  
 CHKD: JFURPHY 2008/11/12  
 APPR: JFURPHY

QUALITY SYMBOLS  
 ▽=0  
 ◻=0

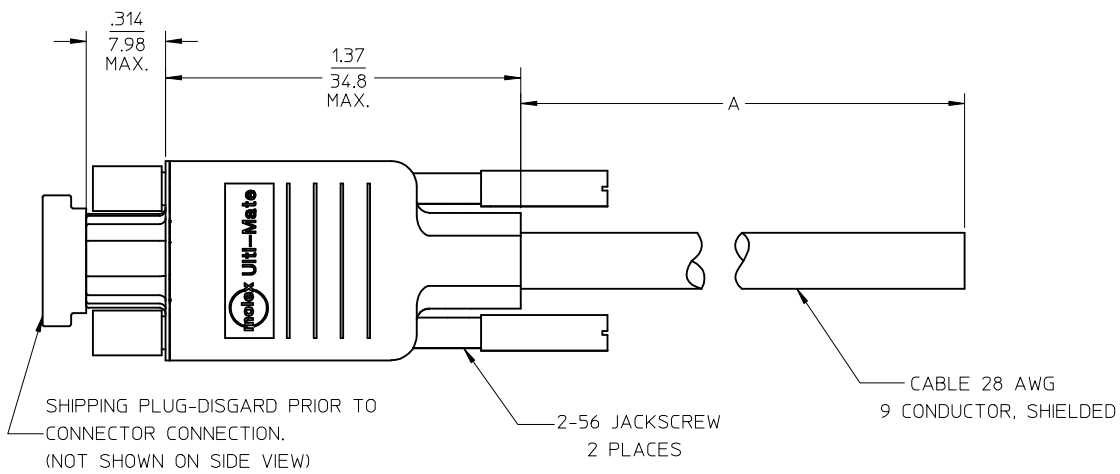
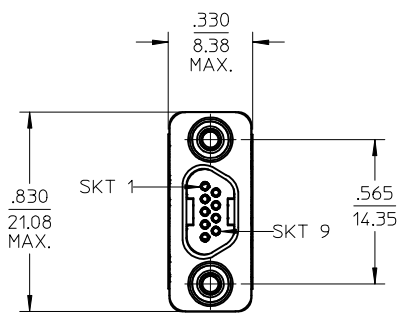
GENERAL TOLERANCES (UNLESS SPECIFIED)

	mm	INCH
4 PLACES	± ---	± ---
3 PLACES	± ---	± .005
2 PLACES	± 0.13	± .01
1 PLACE	± 0.25	± ---
ANGULAR ± 1/2°		

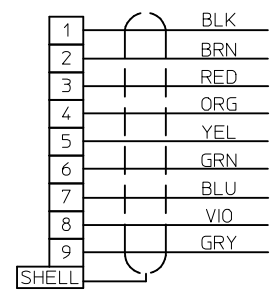
DRAFT WHERE APPLICABLE MUST REMAIN WITHIN DIMENSIONS

DIMENSION STYLE IN/MM  
 DRAWN BY JLOMASTR DATE 05/01/26  
 CHECKED BY RDEROSS DATE 05/02/02  
 APPROVED BY REDORSS DATE 05/02/04  
 MATERIAL NO. SEE CHART

SCALE 2:1  
 DESIGN UNITS INCH  
 THIRD ANGLE PROJECTION  
 TITLE ASSEMBLY INSTRUCTIONS COMMERCIAL MICRO D CONNECTOR  
 MOLEX INCORPORATED  
 DOCUMENT NO. SD-83421-006 SHEET NO. 2 OF 2  
 THIS DRAWING CONTAINS INFORMATION THAT IS PROPRIETARY TO MOLEX INCORPORATED AND SHOULD NOT BE USED WITHOUT WRITTEN PERMISSION



PART NUMBER	A±.5
834219023	4.5
834219042	18.5
834219043	36.5
834219044	72.5



1. MARKING: NONE.  
 NOTES: UNLESS OTHERWISE SPECIFIED.

REDRAWN EC NO: WNA2008-0145 DRWNR:RUPERT 2008/10/17 CHKD: APPR: JF MURPHY 2008/11/12	QUALITY SYMBOLS	GENERAL TOLERANCES (UNLESS SPECIFIED) 4 PLACES ± --- ± --- 3 PLACES ± --- ± .005 2 PLACES ± --- ± .01 1 PLACE ± --- ± --- ANGULAR ± 2°	DIMENSION STYLE	SCALE	DESIGN UNITS	THIRD ANGLE PROJECTION	
			IN/MM	2:1	INCH		
			mm INCH	DRAWN BY DATE D. URBACH 2AUG99 CHECKED BY DATE F. VAN WYK APPROVED BY DATE			
				MATERIAL NO. 834219023 DOCUMENT NO. SD-83421-9023 SHEET NO. 1 OF 1			
		DRAFT WHERE APPLICABLE MUST REMAIN WITHIN DIMENSIONS	TITLE CONN ASSY, COMM-D 9 SKT, SPECIAL MOLEX INCORPORATED THIS DRAWING CONTAINS INFORMATION THAT IS PROPRIETARY TO MOLEX INCORPORATED AND SHOULD NOT BE USED WITHOUT WRITTEN PERMISSION				